

PPA Pedersen & Pedersen
Auctions



FALL SURPLUS PUBLIC AUCTION

WEST CAL ARENA

401 Arena Rd
Sulphur, La 70665



**FRIDAY, OCTOBER 28TH &
SATURDAY, OCTOBER 29TH**
starting 9am both days



**Also inside:
Information on
upcoming Auctions**

See our website for more info:
www.TheBestAuctions.net

This will be a live auction with online bidding available both days. This will be a drive thru auction and will have ample bleacher & folding chair seating. Concessions will be provided by West-Cal arena.

Construction, industrial, farm equipment as well as related items will be accepted. We will also accept heavy duty trucks, trailers, RVs, golf cars, ATVs, zero turn & riding mowers and vehicles are welcome consignments. We will be onsite from Monday, October 24th and will accept items for sale until Thursday, October 27th between the hours of 9am and 4pm. Everything must be onsite by Thursday, October 27th at 4pm.

Friday, October 28th we will be selling rolling stock such as dozers, backhoes, excavators, forklifts, manlifts, skid steer loaders, graders, farm tractors, RVs, heavy duty trucks, dump trucks, trailers, and such.

Saturday, October 29th we will be selling golf cars, ATVs, zero turn mowers, cars, trucks, SUVs

BUYER REGISTRATION INFO -If you are attending the auction in person, you will get your buyer registration bidding card at our mobile office trailer on the day of the sale. The office trailer will be located inside of the main covered arena. A valid driver's license must be provided to obtain the bidding card. If you are planning on using the online bidding, you will register online. We will have the link for online bidding on our website soon.

Please remember that by registering and bidding at this auction whether in person or online you are entering into a contract. Any lawsuit filed for non-payment of purchases will be filed in Calcasieu Parish, Louisiana.

TITLE INFORMATION: All vehicles, trailers and 4 wheelers must have title registered in the seller's name (motor vehicle dealers must have bill of sale in their dealer's name) to be accepted for auction. We are not accepting boats at this sale. Titles will be sent out either FedEx or Certified mail. Please make sure when you pay for them to let the cashiers know the correct address. You will have to sign for these titles when they arrive. If you work and or not able to be there to sign, we advise you send to a business address where someone can sign for them. If you prefer, you can elect to pick up the title at our office, but you will need to let the cashier know that when checking out. \$100 document fee will be added to all title items which will cover processing of the titles.

10% Buyer's premium added to all items (an additional 2% will be added to internet buyers). \$100 document fee will be added to all title items which will cover processing of the titles as well as certified mail fee.

Sales tax will be added where applicable.

Everything **MUST** be paid for on sale day. We accept cash, Visa MasterCard, Discover and American Express credit and debit cards. 4% fee added to all credit and debit card payments. We do accept personal and business checks with proper identification and bank letter guaranteeing payment.

All items sold "as is/ where is", with No Guarantees or Warranties. Inspection prior to bidding is recommended and available.

Check back for more info as we get closer to sale day!

AUCTION #1 – DAY 1 (FRIDAY, OCTOBER 28TH) CONSTRUCTION, INDUSTRIAL & FARM MACHINERY these items sell Friday, October 28th

- 2013 Komatsu D39PX-23 dozer, s/n KMTOD122P01090153, enclosed cab, 6-way blade, 2,680 hours showing
- 2011 Komatsu D37PX-22 dozer, s/n KMTOD111T01060593, ROPS, 6-way blade, 3,600 hours
- 1998 Caterpillar D5M LGP dozer, s/n 2RN00376, diesel engine, 6-way blade, ROPS, winch, good undercarriage
- 2018 Komatsu WA470-8 articulating wheel loader, s/n KMTWA129LHNA49375, enclosed cab with air & heat, 26.5R25 tires, 7,048 hours
- 1991 Komatsu WA450-2 articulating wheel loader, s/n A25136, enclosed cab, general purpose bucket, good rubber, work ready
- 1971 Grove RT528-C rough terrain crane, s/n 71601, Cummins diesel, outriggers, 4,795 hours
- 2013 Link Belt 145X3 Spin-Ace excavator, s/n EBBK4-7869, diesel, enclosed cab w/ air, shows 904 hours but the actual hours are 3,904 hours
- 2015 Takeuchi TB230 excavator, s/n 130000316, diesel, ROPS, backfill blade, rubber tracks, 2,104 hours
- 2016 Hitachi ZX85USB-5N excavator, s/n 17631, diesel engine, enclosed cab with air & heat, digging bucket, rubber tracks, backfill blade
- 2012 Komatsu PC55MR-3 excavator, s/n KMTPC212T04016205, diesel engine, ROPS, backfill blade
- 2007 Komatsu PC35MR-2 excavator, s/n KMTPC096C05009282, diesel engine, ROPS, backfill blade, rubber tracks, auxiliary hydraulics, 30" bucket, 1,250 hours
- 2004 Komatsu PC35MR-2 excavator, s/n KMTPC096J05005490, diesel engine, hydraulic thumb, backfill blade, ROPS, rubber tracks, 751 hours
- 2022 Mahindra 4540-4FGAL loader/backhoe, s/n MRCNY9508, diesel engine, 4-wheel drive, ROPS
- 2010 Caterpillar 420E IT loader/backhoe, diesel, 4-wheel drive, ROPS, Drott 4N1 bucket, forks, one owner, 1,400 hours
- Ford 555 loader backhoe, diesel engine
- 2019 Kubota SVL 75 skid steer loader, diesel, enclosed cab with air, 74 hp, rubber tracks, diesel, aux hydraulics, 740 hours
- 2017 Caterpillar 279D skid steer loader, s/n L04394, diesel, enclosed cab with air, quick connect, 2 speed, 2,456 hours
- 2015 Caterpillar 259D skid steer loader, s/n FTL02913, ROPS, diesel engine, 2 speed, rubber tracks, general purpose bucket, 2,662 hours
- 2018 ASV Posi-track RT30 skid steer loader, s/n ASVRT030TJDS08032, diesel, ROPS, auxiliary hydraulics, 833 hours
- 2016 Bobcat T550 skid steer loader, s/n AJZV15173, diesel engine, open cab, general purpose bucket, auxiliary hydraulics, rubber tracks, quick connect, 3,404 hours
- 2016 Bobcat T550 skid steer loader, s/n AJZV15174, diesel engine, open cab, general purpose bucket, auxiliary hydraulics, rubber tracks, quick connect, 3,416 hours
- 2008 Bobcat T320 skid steer loader, s/n A7MP11271, diesel engine, enclosed cab with air (missing front door), general purpose bucket, auxiliary hydraulics, rubber tracks, 2,810 hours
- 1964 Austin Western Super 300 motor grader, s/n, 13669306, diesel engine, enclosed cab, 12' moldboard, 5,924 hours, runs and operates
- 2008 Caterpillar TL943 telehandler, s/n TBL01406, diesel engine, ROPS, 9,000lb capacity, 43' reach, front outriggers
- 2000 Traverse model 8042 extended boom forklift, Cummins diesel
- TMC FG20N4T 4000lb forklift
- Mitsubishi model FGC25 warehouse forklift, s/n AF82B-02971, propane, 5,000lb capacity, 2,866 hours
- Rex model HDSP soil stabilizer, s/n HK1297, Detroit diesel, 18.4x34 tires
- 2006 Broche RC350 sweeper, enclosed cab, s/n 405249, Cummins diesel, 1,189 hours
- Bomag BW145PDH-3 padfoot roller, s/n 901581491233, diesel engine, 576 hours
- 2012 Ditch Witch model XT855 loader/backhoe, s/n CMWXT855JC0000154, diesel engine, rubber tracks, 2,360 hours
- 2014 Massey 4610 diesel tractor, s/n AG3M4610EJK15189, enclosed cab w/air & heat, 99 horsepower, front end loader, 4-wheel drive, shuttle shift, 6 forward & reverse gears, 4 remotes, one owner, 1,189 hours
- 2021 Mahindra 6065 diesel tractor, s/n MP461792, ROPS, front end loader, 4-wheel drive, 3rd function, 208 hours, remotes, 62 horsepower, powershift, 15 forward & reverse gears
- 2015 Mahindra 6110S diesel tractor, s/n 61GCH01896, enclosed cab with air & heat, 61 horsepower, front end loader, 4-wheel drive, 3-point hitch, PTO, 2 remotes
- 2022 Mahindra 2638 diesel tractor, s/n 38HCR03161, enclosed cab with air, 38 hp, front end loader, 4-wheel drive, three-point hitch PTO, 147 hours
- 2017 Mahindra 1538 diesel tractor, s/n 38G150340242, 38 hp, front end loader, 4-wheel drive, three-point hitch, PTO, 598 hours
- 2021 Mahindra 1626HST diesel tractor, s/n 26H200324153, front end loader, 4-wheel drive, hydrostatic transmission, 3-point hitch, PTO, 96 hours
- Mahindra 26XL diesel tractor, s/n 26MH150981789, hydrostatic drive, 3-point hitch, PTO
- Mahindra 575 diesel tractor
- Kubota M9960 diesel tractor, three-point hitch, PTO
- 2018 Kubota L2501D diesel tractor, s/n 67622, 25 horsepower, front end loader, 4-wheel drive, hydrostatic transmission, 3-point hitch, PTO,

quick attach loader bucket, looks and runs like new, 97 hours

2012 Kubota L4600 diesel tractor, s/n 50123, 46 horsepower, front end loader, 4-wheel drive, hydrostatic transmission, 2,269 hours, maintenance records

2013 Kubota L3200 diesel tractor, s/n 30374, front end loader, 2-wheel drive, 32hp, three-point hitch, PTO, 302 hours, pre-emission

Kubota L3000 diesel tractor, 3-point hitch, PTO
John Deere 5420 diesel tractor, front end loader, 4-wheel drive, remotes, 81HP, three-point hitch, PTO, has rebuilt engine, new rods & bearings, new oil & filters about 10 hours ago, 2800 hours

John Deere 2755 diesel tractor, 88 horsepower, front end loader, 2-wheel drive

2021 John Deere 3025E diesel tractor, s/n 1LV3025EEMM150236, front end loader, 4-wheel drive, 25HP, three-point hitch, PTO, 67 hours, sells with three-point hitch quick hitch attachment

2020 John Deere 3025D diesel tractor, s/n 1PY3025DHKB001032, front end loader, 4-wheel drive, 25HP, three-point hitch, PTO, 98 hours

John Deere 3005 diesel tractor, s/n LV3005G200111, front end loader, 4-wheel drive, 30hp, three-point hitch PTO, ROPS, 814 hours

John Deere tractor, stripped

New Holland model 1715 diesel tractor, 27 hp, three-point hitch, PTO

New Holland 6610 diesel tractor, s/n 359198M, 85 hp, three-point hitch, PTO, 4 remotes

New Holland TC30 diesel tractor w/ front end loader, 4-wheel drive

Ford 4610 diesel tractor w/ front end loader & rotary mower

1985 Ford 3400 industrial tractor, front end

loader, 2-wheel drive, three-point hitch, PTO
2 - Ford 3000 diesel tractors, 3-point hitch, PTO, power steering

Long 2510 diesel tractor, 45 horsepower, front end loader, 2-wheel drive, bucket & hay spear, hours not showing

Zetor 6245 diesel tractor, s/n 4-1558, front end loader, enclosed cab, 2 wheel drive, 3 point hitch, PTO, remotes, 66 horsepower, sells with bale spear - no bucket

Nortrac model NT204C diesel tractor, 3-point hitch, PTO, new radiator

Ingersol-Rand 185 cfm air compressor, diesel engine

Rhino model SE415A pull type batwing mower, 15' cut

Arps 3-point hitch backhoe

Pra Mac model GSW35Y diesel generator, 35KW single phase, Yanmar diesel engine.

NEW 2022 Titan model 1205SCC-RA rotary mower, s/n 192900, 5', used as a demo - never been sold

New Land Pride 5' box blade

Three-point hitch finishing mower, 5' with quick hitch attachment

Land Pride model RCR1260 rotary mower, 5' cut

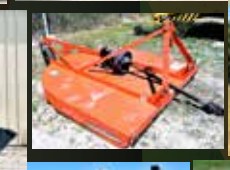
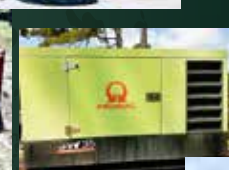
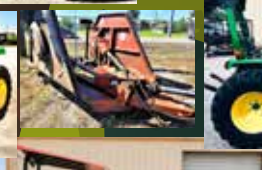
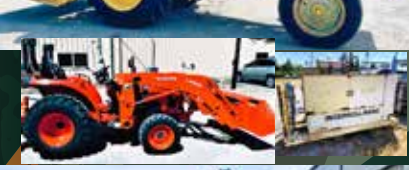
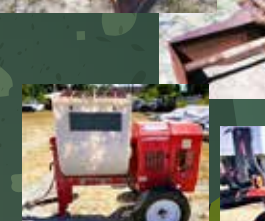
Howse 4' rotary mower

Bushhog model SBX60 box blade, 5'

Box blade, 6'

Whiteman model WM90PH0 cement mixer, s/n L1659643, Honda gas engine

Shopmade heavy duty log splitter



HEAVY DUTY TRUCKS, TRAILERS, RVS - these items sell Friday, October 28th

2007 Tiffan Phaeton 42' motorcoach, Freightliner chassis, Caterpillar 350 diesel engine, automatic transmission, 4 slide outs, power awning, air ride front and rear, auto levelers, aluminum wheels, new 22.5 tires, Onan Quiet 7500 diesel generator, leather interior, dinette, double door refrigerator/freezer, 58,816 miles, recently serviced completely

2012 Freightliner Coronado 3 axle heavy haul truck, Detroit DD1 diesel engine, 18 speed, air ride, aluminum wheels, aluminum tanks, aluminum headache rack, 5th wheel, GVWR 84,740 lbs, Front 18,740 lbs., Rears 20k & 23K lbs., 313,902 miles

2007 Kenworth tandem axle heavy haul truck, Cummins ISX diesel engine, 10 speed, air ride, wet kit, 11R24.5 tires, aluminum wheels, tank & headache rack, 5th wheel, GVWR 59,200lbs, GAWR Front 13,200lbs, GAWR Rear 23,000lbs, 278,807 miles

2005 Peterbilt 378 tandem axle haul truck, Caterpillar C15 diesel engine, 13 speed, aluminum wheels, aluminum tank, GVWR 50,000 lbs., GAWR front 12,000lbs, GVWR rear 19,000 lbs., 11R24.5 tires

2012 International Durastar 4300SBA 4x2 single axle bucket truck, MaxForce engine, Fuller 6 speed transmission, air brakes, air conditioning, BG utility bed, 4 outriggers, 187" wheelbase, Terex Hi-Ranger model 5FC-55 bucket lift, 55' platform height, inspected and certified in May of this year

2007 International 7400 series tandem axle bucket truck, DT466 diesel engine, Allison automatic transmission, air brakes, a/c & heat, pintle hitch,

outriggers, 315/80R22.5 front tires, 11R22.5 rear tires, Terex utility bed, Terex Hi-Ranger model TCX-55 bucket lift, 55' reach, 184k miles, GVWR 56k lbs., GAWR front 16k lbs., rear 20k lbs.

2005 Volvo tandem axle truck with mobile home hitch, Cummins ISX diesel engine, 13 speed transmission, sleeper, air brakes, aluminum wheels & tank, 5th wheel, 295/80R22.5 tires, air ride, GVWR 50,500K lbs, oversized mirrors, VIN 4V4NC9TH45N393700

2001 Peterbilt tandem axle box truck, Cummins diesel engine, 10 speed, air ride 24' box, lift gate, air brakes

2022 Ram 5500 series cab & chassis, Cummins 6.7 turbo diesel engine, crew cab, automatic transmission, aluminum wheels, running boards, flip out mirrors, Laramie package, leather interior, power seats on both front seats, power windows & locks, tilt & cruise, navigation, backup camera, GVWR 19,500lbs, GAWR front 7,250lbs, GAWR rear 13,500lbs, this truck only has 30 miles on it. It was purchased for a specific job that did not pan out and that is why it is for auction. Absolute perfect truck!

2015 Ram 5500HD regular cab flatbed truck, Cummins diesel, 2-wheel drive, automatic transmission, 321k miles (this truck has been deleted)

2017 Ford F350 crew cab flatbed truck, gas engine, 185k miles

1999 Lidell 3 axle equipment trailer, detach neck, Honda pony motor

1998 Trail Master 3 axle crude trailer, aluminum tank with steel sub frame, 9,240-gallon capacity, 1 compartment,

new suspension including airbags, shocks, & bearings, 73K GVWR, 22.5 tires, complete vapor recovery, Titan Logic over fill system. 4" Roper pump, all electronics and auto fill work properly, recently cleaned, ready to work

1985 Polar tandem axle tank trailer, aluminum tank, steel sub-frame, 9,050-gallon capacity, 4 compartments (2500-gallon, 1200-gallon, 1850-gallon, 3500-gallon), air ride, 24.5 tires, vapor recovery, Dixon overfill system, bottom load

2021 PJ gooseneck 36' x 102" equipment trailer, hydraulic jacks, slide in ramps

2021 Top Hat gooseneck 25' (20' deck with 5' dovetail) equipment trailer, monster ramps, 2 - 7K axles, 14 ply tires

2019 Gooseneck steel frame stock trailer, tarp top, 32' x 6'8", 3 - 7,000lb axles, rubber cleated floors, 3 cut gates, 14 ply tires, full escape door on passenger side, electric jack, rear butterfly gates

1992 Featherlite 2 horse slant load trailer with living quarters, 28' long, 13' short wall

2017 PJ bumper hitch 26' x 83" tilt deck trailer, 3 - 7k axles, new brakes, hubs & 7 new 14 ply tires

2020 Texas Bragg gooseneck 20' x 83" equipment trailer, slightly used

1991 Tatra pintle hitch equipment trailer, dual tandem axles, 15' deck with 5' dove tail, ramps

2011 Performance 40' gooseneck equipment trailer, 2 - 15k axles, hydraulic tail

2012 Dutchman Voltage 5th wheel camper model V2005, all weather package, 2 slide outs, toy hauler, power awning, Onan model RVQ5500 Cummins powered generator, GVWR 16,500 lbs

2013 Forest River Lacrosse Travel Trailer vin# 5ZT2LCXB7DB00357

2005 Cimmaron 3 horse slant load trailer-gooseneck, model NS3HG22706270E, tandem axle, tack room, 102" wide, living quarters, GVWR 12k lbs.

Shopmade parade float, 43' in length, rear step entry, sells with speaker system ready to hook to I-pod or other music source, includes several bags of Mardi Gras beads. This float was built on a hay wagon and has a gooseneck hitch added to it. Sells with bill of sale only - No Title

2002 Ameritrail model GN25 gooseneck equipment trailer

2 - 5x8' single axle cargo trailers

Towmax 5x10' bumper hitch utility trailer w/ ram

Several other bumper hitch & gooseneck equipment trailers



AUCTION #1 – DAY 2 (SATURDAY, OCTOBER 29th)

ABSENTEE ITEMS – These items sell Saturday, October 29th starting right after the announcements at 9am.

These vehicles will be sold absentee and do not run or are wrecked. They are from the Calcasieu Parish Sheriff's Office. These vehicles are located at 6170 Hwy 90 East, Lake Charles, LA 70615. These vehicles will sell right after the absentee air conditioners and modular building.

- | | | | |
|----------------------|-----------------------|-----------------------|------------------------|
| 2004 GMC 2500 | 2010 Chevrolet Tahoe | 2014 Chevrolet Impala | 2016 Dodge Charger |
| 2007 Dodge Charger | 2010 Dodge Charger | 2014 Dodge Charger | 2016 Ford Explorer |
| 2-2007 Dodge Durango | 2010 Chevrolet Impala | 2015 Chevrolet Impala | 2016 Ford F150XL |
| 3-2008 Ford F250XL | 3-2012 Dodge Charger | 2015 Chevrolet Tahoe | 2-2016 Chevrolet Tahoe |
| 2008 Dodge Durango | 2012 Chevrolet Tahoe | 2015 GMC 2500 | 2018 Ford Explorer |
| 2009 Ford F150 | 2-2014 Dodge Ram 1500 | 2015 Dodge Ram 1500 | 2018 Dodge Ram 1500 |
| 2009 Chevrolet Tahoe | 2014 Dodge Ram | 2015 Dodge Durango | 2020 GMC Acadia |



Approximately 280 window unit air conditioners – located at 3800 Mallard Cove Drive, Lake Charles, La.



24' x 44' modular building previously used as a substation for the Calcasieu Parish Sheriff Department. It is being sold to be moved. This is a 2-piece modular building and is located at 4525 Highway 27 south of Sulphur. The concrete steps and awning areas are not included. This building has had some storm/water damage. Contact Mike Johnson at 337-263-3813 to schedule a pre-sale inspection.



GOLF CARS, ATVs, ZERO TURN AND RIDING MOWERS – these items sell Saturday, October 29th

- Several golf cars of assorted brands and styles
- 2016 Cub Cadet Hisun 750 ATV, crew seats, gas engine, winch, automatic 4-wheel drive
 - 2012 Can-AM Commander
 - Honda Foreman ES 4-wheeler
 - Yamaha Raptor 350 special edition 4 wheeler
 - Kubota model RCK60P-331Z zero turn mower, 60" cut, diesel engine, s/n 65599, 832 hours
 - Gravley Promaster 300 zero turn mower
 - Yazoo 22" big wheel mower
 - Snapper model M300921B riding mower, 30" cut, Briggs & Stratton engine
 - Snapper model 1230 convertible riding mower
 - 2 - Scagg model 5TT52A mowers
 - Craftsman DYS 4500 Zero Turn Mower, 46" Cut, Briggs & Stratton Intec. 725cc. 24 Hp. Serial# 121007B002789, Hours-Na
 - Craftsman Z-6400 Zero Turn Mower, 46" Cut, Kohler 7000 Series, 725cc, 24hp, Serial# 1B235H20196, Hours-687
 - Craftsman T1400 Zero Turn Mower, 42" Cut, Briggs & Stratton, 500cc, 17.5hp, Serial# 1A205B70175, Hours-Na
 - Husqvarna YTH 2242 Lawn Tractor Mower, 42" Cut, Briggs & Stratton Pro, 724cc, 24 Hp, Serial# 011609A002333, Hours-Na
 - Toro SS5000 Time Cutter Zero Turn Mower, 50" Cut, Kawasaki Fr691v, 23 Hp, Serial# 315009955, Hours-Na
 - Big Dog Alpha MP. Zero Turn Mower, 54" Cut, Kawasaki 7r691v, 23hp, Serial# 161250800, Hours-294

- Grasshopper 125v Zero Turn Mower, 48" Cut, Kohler Zt740ccw, Serial# 6614975, Hours-453
- Gravely Pro-Master 260 Commercial Zero Turn Mower, 48" Cut, Model 992217, Serial# 003090
- Kawasaki Fx850v, 27hp, Hours-Na
- Ex-Mark Lazer ZXS Zero Turn Mower, 60" Cut, Lxs25kd665 Kubota Diesel, 25hp, Serial# 757635, Hours-
- John Deere Z645 Zero Turn Mower, 48" Cut, Kawasaki 24hp, Serial# 1GXZ645VCF170297, Hours-523
- John Deere E180 Lawn Tractor, 54" Cut, Briggs & Stratton V-Twin, 25hp, Serial# 1GXE180ECJJ020829, Hours- 113
- 2018 Bad Boy ZT Elite 60 Zero Turn Mower, 60" Cut, Kohler 26hp, Serial# BZ60KT745P04180628, Hours-259
- 2021 Bad Boy Maverick Zero Turn Mower, 60" Cut, Kohler Confidant 747cc, Serial# BMR60ZT74004210470, Hours-233
- 2020 Bad Boy Maverick Zero Turn Mower, 54" Cut, Kawasaki, Serial# BMV54FS73003200002, Hours-94
- 2020 Bad Boy Maverick Zero Turn Mowers, 54" Cut, Honda GXV 630 688cc, Serial# BMV54GXV6305200014, Hours-71
- 2018 Bad Boy Outlaw Zero Turn Mower, 54" Cut, Kohler 747cc, Serial# BB054ZT740011800003, Hours-
- 2017 Bad Boy Outlaw XP Zero Turn Mower, 61" Cut, Vanguard 993cc, 36hp, S/N# BBX6136VA07171059, Hours-
- 2017 Bad Boy outlaw XP Zero Turn Mower, 72" Cut, Vanguard 36 Hp, Serial# BBX7236VA09171013, Hours-
- 2019 Bad Boy Rouge Zero Turn Mower, 72" Cut, Kawasaki FX1000,

- Serial# BR07235RA06190013 Hours-177
- 2019 Bad Boy Renegade Zero Turn Mower, 72" Cut, Vanguard 37hp, Serial# BRN6137VA06190030, Hours-(Screen Has Been Changed Shows 5 Hours)-Approx 150hrs.
- 2020 Cub Cadet Ultima Zt1 Zero Turn Mower, 50" Cut, Kawasaki FR691V 23hp, Serial# 1L189H10346, Hours-132
- 2022 Cub Cadet Ultima Ztx4 Zero Turn Mower, 60" Cut, Kohler 7000 Series Pro 24 Hp, Serial# 1E12NH60003, Hours-12 (Dealer Demo)****Warranty Starts When Purchased
- 2012 Landmaster Lm400 UTV, 2wd, Two-Seater, Honda Engine 390cc, Serial# A4PUTXH1TCA20588A, Hours-Na
- 2022 Landmaster L3 UTV, 2wd, Two-Seater, Serial# A4PUTYFB4NBA0069, Hours- Customer Traded For Larger Model****Warranty Starts When Purchased



CARS, PICKUPS, SUVs, VANS - these items sell Saturday, October 29th

We will have over 200 vehicles to choose from – this is only a small portion of what we will have

TRUCKS

2017 Ford F150 XL

crew cab pickup, V6, automatic, 4-wheel drive, power windows & locks, tilt & cruise, cloth seats, short wheelbase, new tires, 75K miles, spray in bed liner

2016 Chevy Silverado regular cab pickup, V6 gas engine, new automatic transmission, 198k miles, toolbox, am/fm radio

2014 Dodge 1500 crew cab pickup, 5.7-liter Hemi gas engine, automatic transmission, loaded with electric options, leather interior, Recon Title, 113K miles

2000 BMW Z3 Roadster convertible, post-facelift model, 132k miles, Manual transmission,

Runs and drives well, Shifts smooth

1992 Jeep Wrangler, CJ5

1999 GMC Sierra

2005 Nissan Titan

2006 Ford F250 King Ranch 4x4

2006 Ford F350 4x4

2006 Lincoln pickup

2008 Chevrolet 2500HD crew cab truck, gas engine, 4 wheel drive, flatbed

2008 Ford F250, crew cab, diesel, 4-wheel drive

2009 Jeep wrangler, 4 door

2010 GMC Sierra

2011 Ford F150XLT

2011 Ford F150XLT

2012 Jeep Grand Cherokee

2013 Ram 2500

2014 Dodge Ram

2015 Toyota Tacoma

2017 Ford F350 4wd

2015 Toyota Tacoma Pre-Runner, quad door, loaded

SUVs

1997 Jeep Cherokee

2000 Cadillac Escalade

2001 Lexus RX300

2002 Lexus RX300

2005 BMW X5

2005 Ford Explorer

2006 Ford Expedition, King Ranch package

2006 Jeep Commander 4x4

2007 Cadillac Escalade

2007 Chevrolet Tahoe LTZ 4x4 Z71

2007 Saturn Vue

2007 Dodge Durango

2008 Isuzu Ascender

2009 Chevrolet Trailblazer

2009 Chevrolet Equinox

2009 Honda Pilot

2010 Dodge Journey

2011 Dodge Durango

2011 Chevrolet Equinox

2012 Chevy Equinox

2014 Ford Escape

2014 Ford Explorer

2015 Honda Pilot

2017 Land Rover

Pontiac Aztek

VANS & BUSES

2006 Ford E250

2006 Toyota Sienna LE

2011 Chevrolet Van

2006 Blue Bird

CARS

2001 Lexus ES300

2003 Honda Accord

2003 Lexus ES300

2005 Dodge Magnum RT

2005 Chevrolet Cobalt

2006 Lexus GS 300

2006 Mercury Milan

2006 Chevy Suburban

2007 Mazda3

2007 BMW 525i

2007 Dodge Caliber

2007 Toyota Corolla

2008 Chevrolet Impala

2008 Saturn Aura

2009 Toyota Corolla

2009 Chevrolet Impala

2009 Chevrolet Cobalt

2-2010 Toyota Camry

2010 Pontiac Vibe

2012 Hyundai Genesis

2012 Chevy Impala LT, silver

2012 Chevrolet Camaro

2012 Ford Focus

2012 Dodge Charger

2013 Buick Regal

4-2013 Chevrolet Impala

2014 BMW 320i

2014 Dodge Charger

3 - 2014 Chevrolet Impalas

2015 Chevrolet Impala

2016 Nissan Altima

2016 Chevy Impala LT, charcoal gray

Buick Park Avenue



Auction # 2

CAL/CAM PARISH MISCELLANEOUS AUCTION

Saturday, November 19th starting at 9am

Burton Coliseum • 7001 Gulf Hwy • Lake Charles, LA 70607

Auction Description: We will be selling for the Calcasieu Parish Police Jury, Sheriff's Department, School Board, City of Lake Charles, area businesses, contractors, farmers, and individuals.

CONSIGNMENTS ARE WELCOME - We will be onsite from Monday, November 14th and will accept items for sale until Thursday, November 17th between the hours of 9am and 4pm. Everything must be onsite by Thursday, November 17th.

We will be selling miscellaneous items such as a big selection of stainless-steel kitchen tables and cafeteria equipment, three-point hitch implements, pumps, small generators, welding machines, lawnmowers, weed eaters, office furniture, computers, printers, other office items and more



AUCTION #4

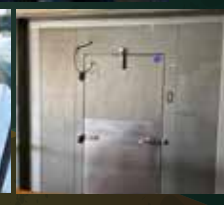
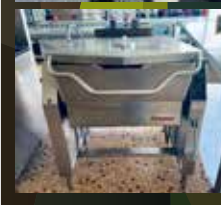
HACKBERRY HIGH SCHOOL SALE

Saturday, January 14th 2023

1390 School St, Hackberry, LA 70645

This auction will be live auction in real time and we will also provide online bidding hosted by Proxibid.

We will be selling items from the old Hackberry High school for the Cameron Parish School Board. Items to be sold include Generators, A/C Units, Heating Units, Commercial kitchen appliances, Projectors, Promethean boards, Chalk boards, White boards, Lockers, Desks, Chairs and other miscellaneous office supplies. We will not be accepting consignments at this sale.



Auction # 3

ONLINE MOBILE HOME AUCTION

Bidding Opens: Thursday, December 1st

Bidding Closes: Wednesday, December 7th

These mobile homes belong to the Calcasieu Parish Sheriff's Department. They purchased them from the distributor to house some deputies while their homes were being repaired from storm damage. These homes have not had storm or water damage and were brought in after the hurricanes. These mobile homes are located at 1100 James Sudduth Pkwy in Lake Charles, Louisiana 70615.

We will have a preview day on Friday, December 2nd between the hours of 9am and 2pm.

Online bidding will start on these mobile homes on Thursday, December 1st at 5pm and will end on Wednesday, December 7th. They are available for online bidding only.



UPCOMING AUCTIONS



PRESORTED
FIRST CLASS MAIL
US POSTAGE PAID
LAKE CHARLES, LA
PERMIT NO. 300

#1 - FALL SURPLUS AUCTION

FRIDAY, OCTOBER 28TH &
SATURDAY, OCTOBER 29TH

WEST CAL ARENA

401 Arena Road • Sulphur, La 70665

#2 - CAL/CAM PARISH SURPLUS AUCTION

SATURDAY, NOVEMBER 19TH

BURTON COLISEUM - BARN

7001 Gulf Highway • Lake Charles, La

#3 - SHERIFF'S DEPARTMENT 12 MOBILE HOMES

BIDS BEGIN-THURSDAY, DECEMBER 1ST
ENDS-WEDNESDAY, DECEMBER 7TH
ONLINE AUCTION

www.TheBestAuctions.net

#4 - HACKBERRY HIGH SCHOOL SALE

SATURDAY, JANUARY 14TH 2023
HACKBERRY HIGH SCHOOL
1390 School St, Hackberry, LA 70645

6170 HIGHWAY 90 EAST LAKE CHARLES, LA 70615 **(337)436-2497**

Mark Pedersen Trailer Sales, LLC

"Selling Quality trailers to Quality Customers for over 40 years"



www.thebesttrailers.net